

#EUYearofRail



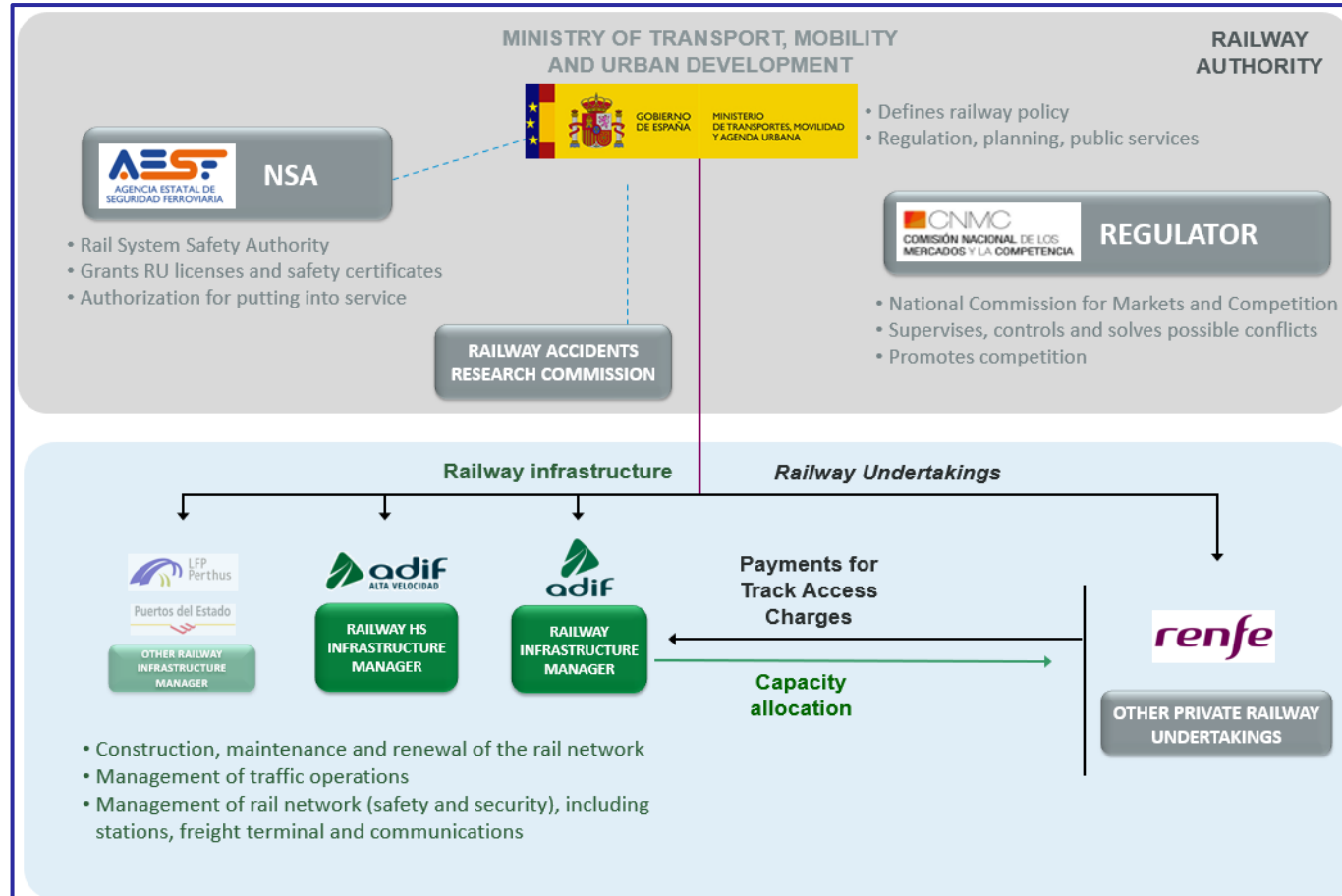
WHAT FUTURE FOR PASSENGERS AND FREIGHT RAIL TRANSPORT IN PORTUGAL AND SPAIN

Iberian Cooperation on infrastructure Interoperability
Vision for the future

Fernando Nicolás Puiggarí
International Director. Adif

SFM '21 | Lisbon | November 10-12, 2021

Current railways scenario in Spain



Global figures. Adif – Adif HS

Figures



Rail network: **15.519 km**



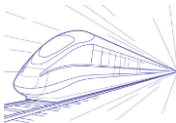
Passenger stations: **1.493**



Freight terminals: **38**



1.815 km of new lines under construction



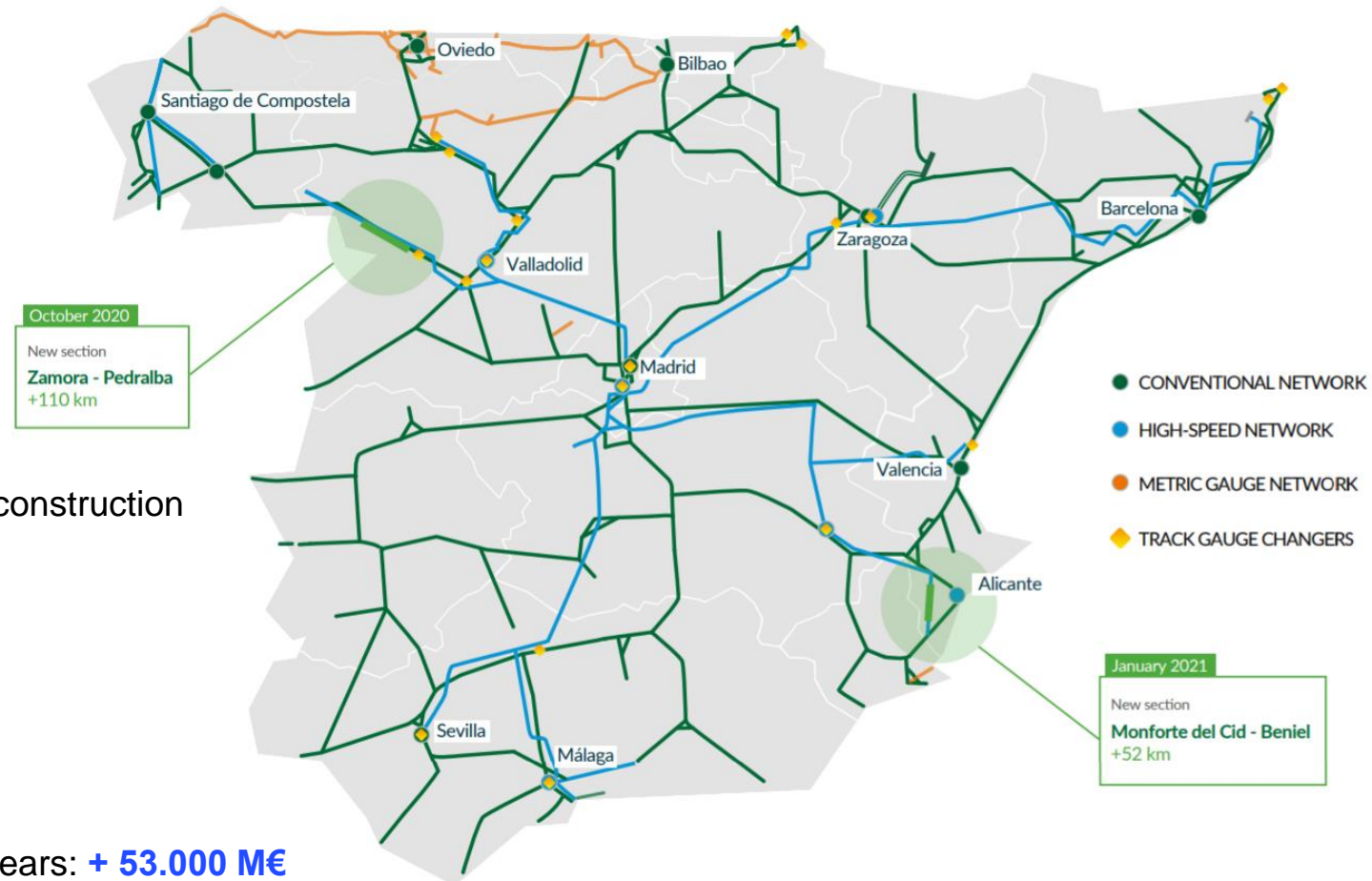
High Speed network: **3.621 km**



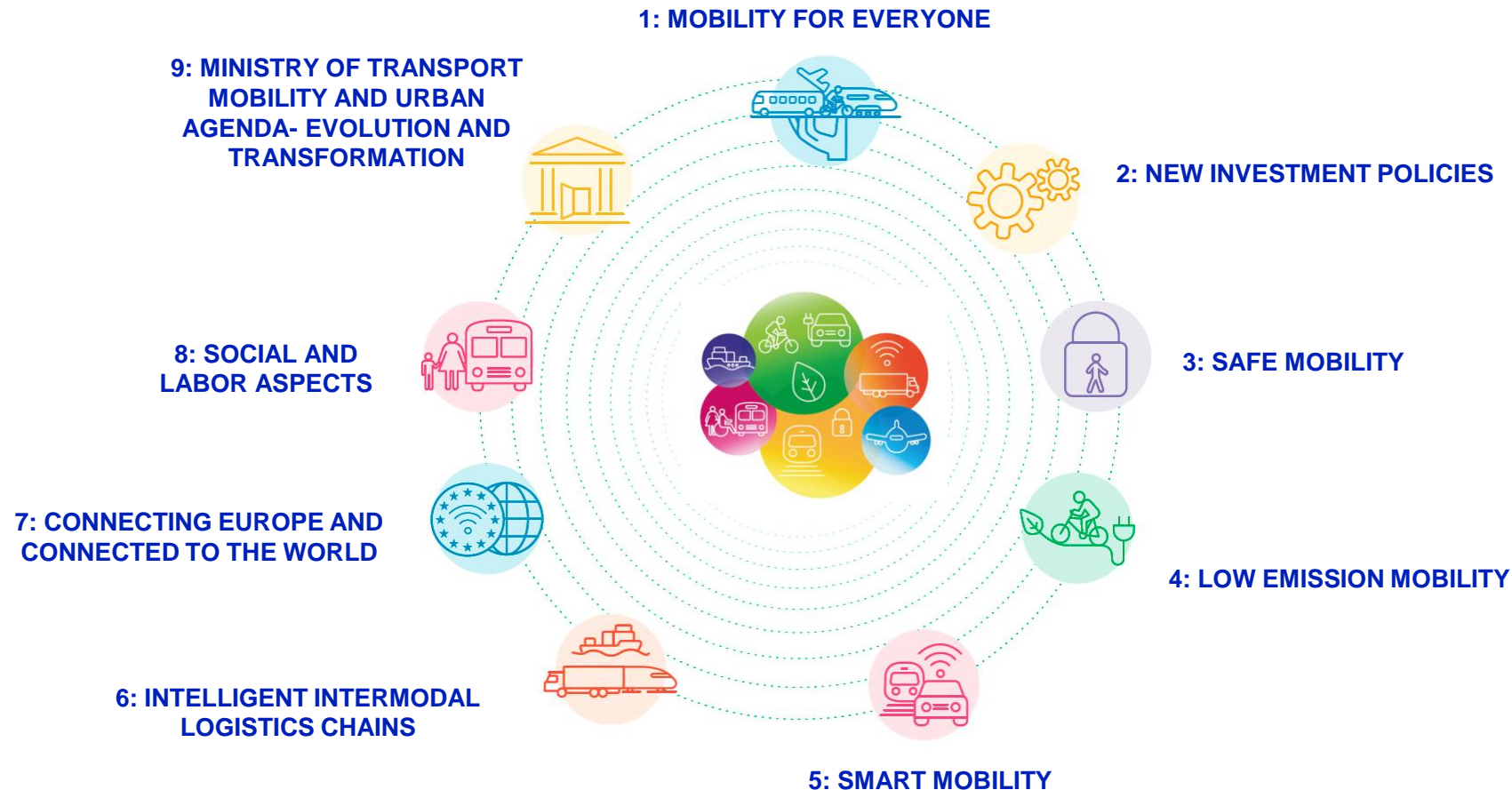
Trains running daily: **6.100**



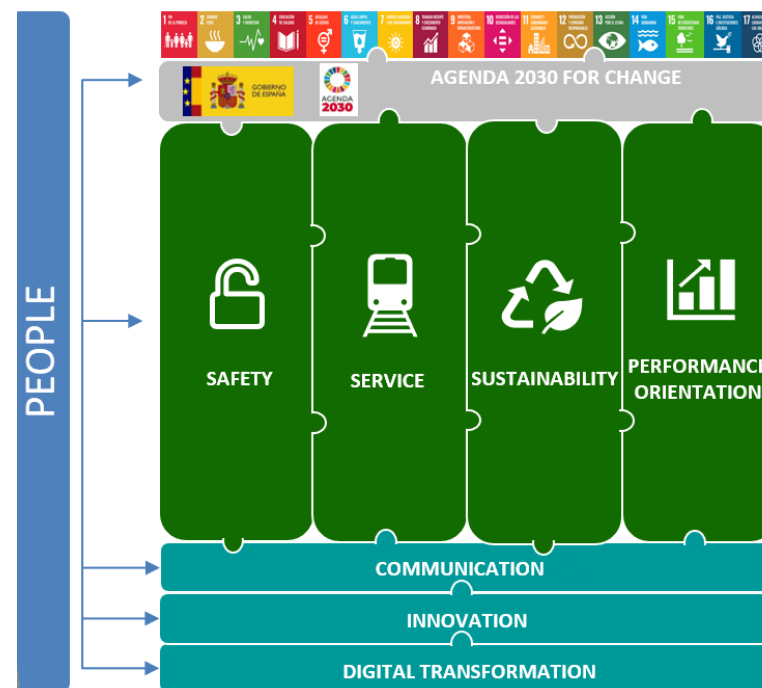
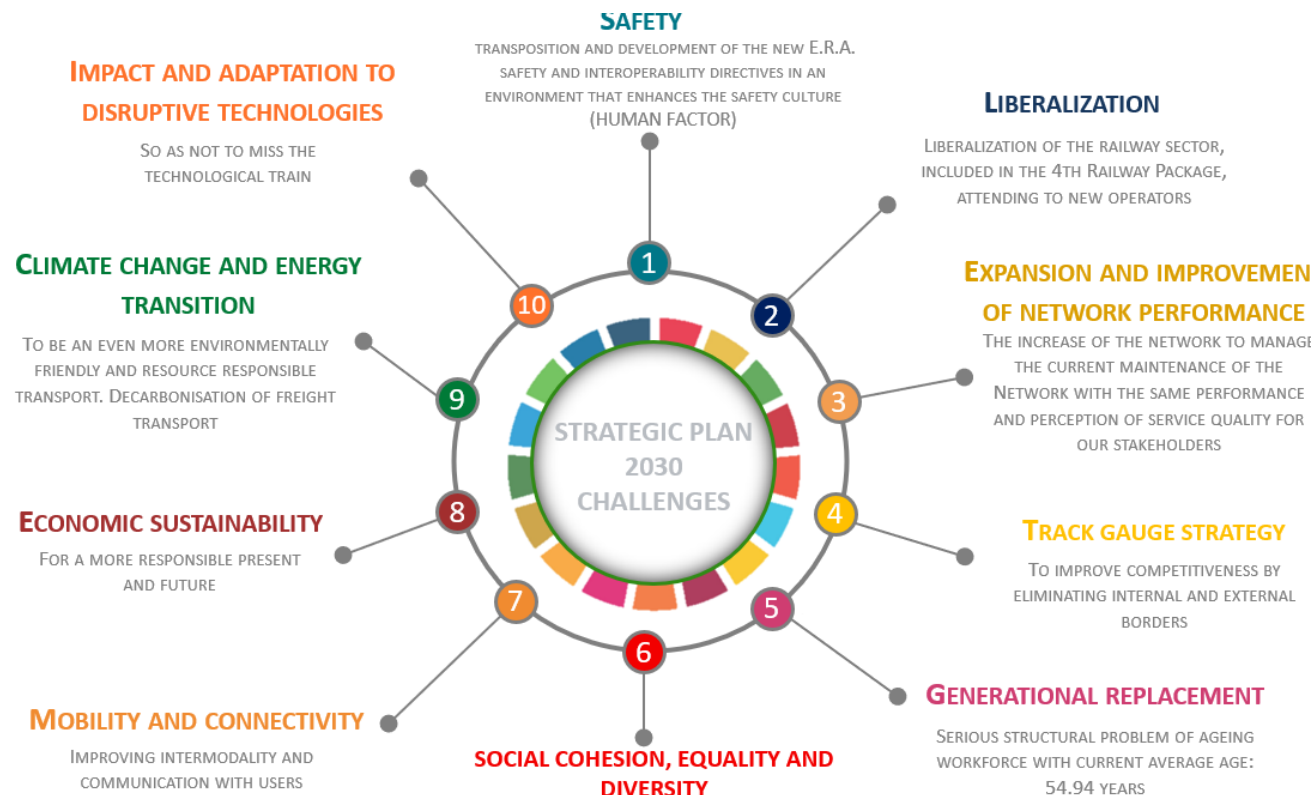
Main investor in Spain over the last 15 years: **+ 53.000 M€**



Safe, Sustainable and Connected Mobility Strategy 2030

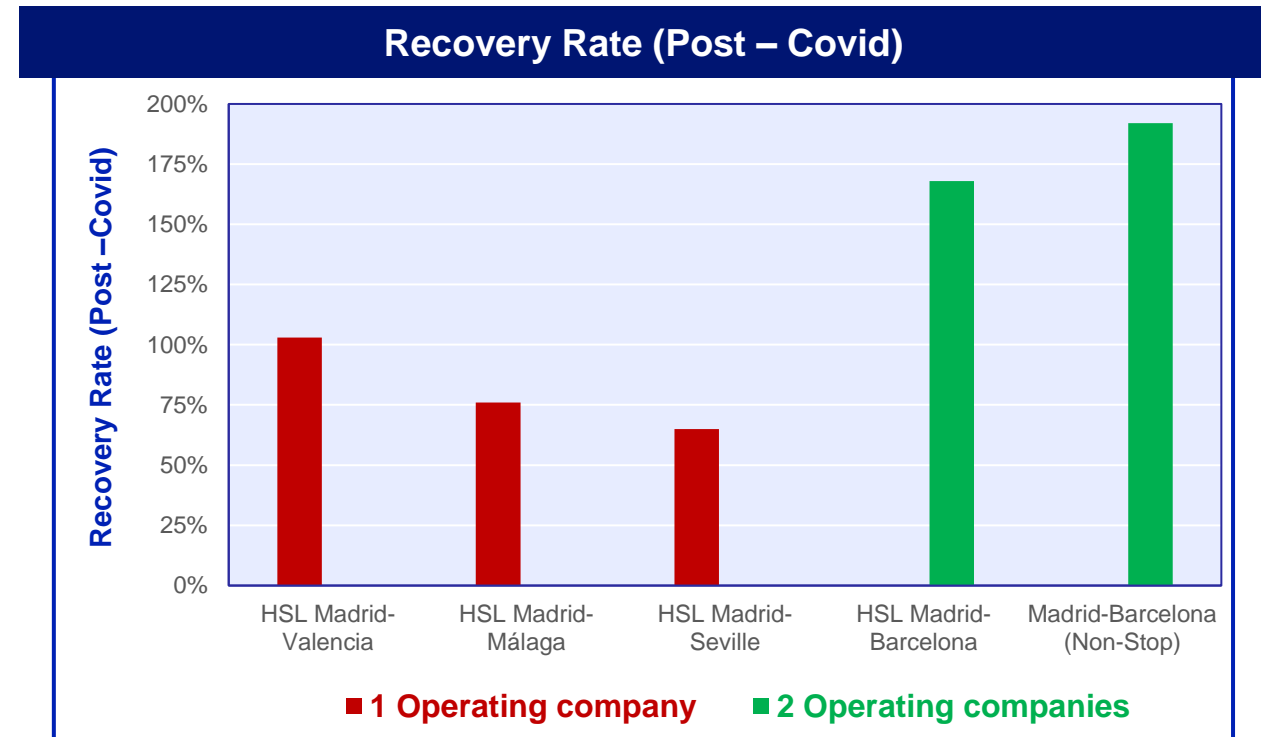


Strategic Plan 2030

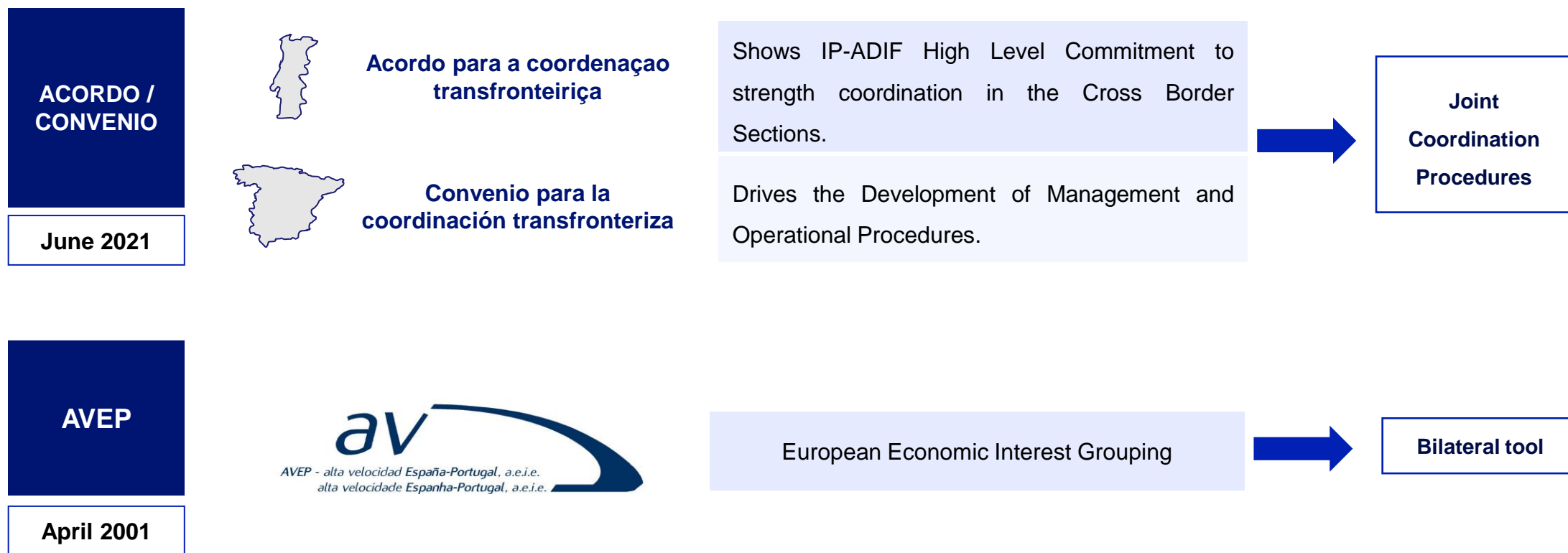


People, as ADIF's driving force, will raise four strategic pillars: Safety, Service, Sustainability & Performance orientation using three transformation levers: Communication, Innovation & Digital Transformation.

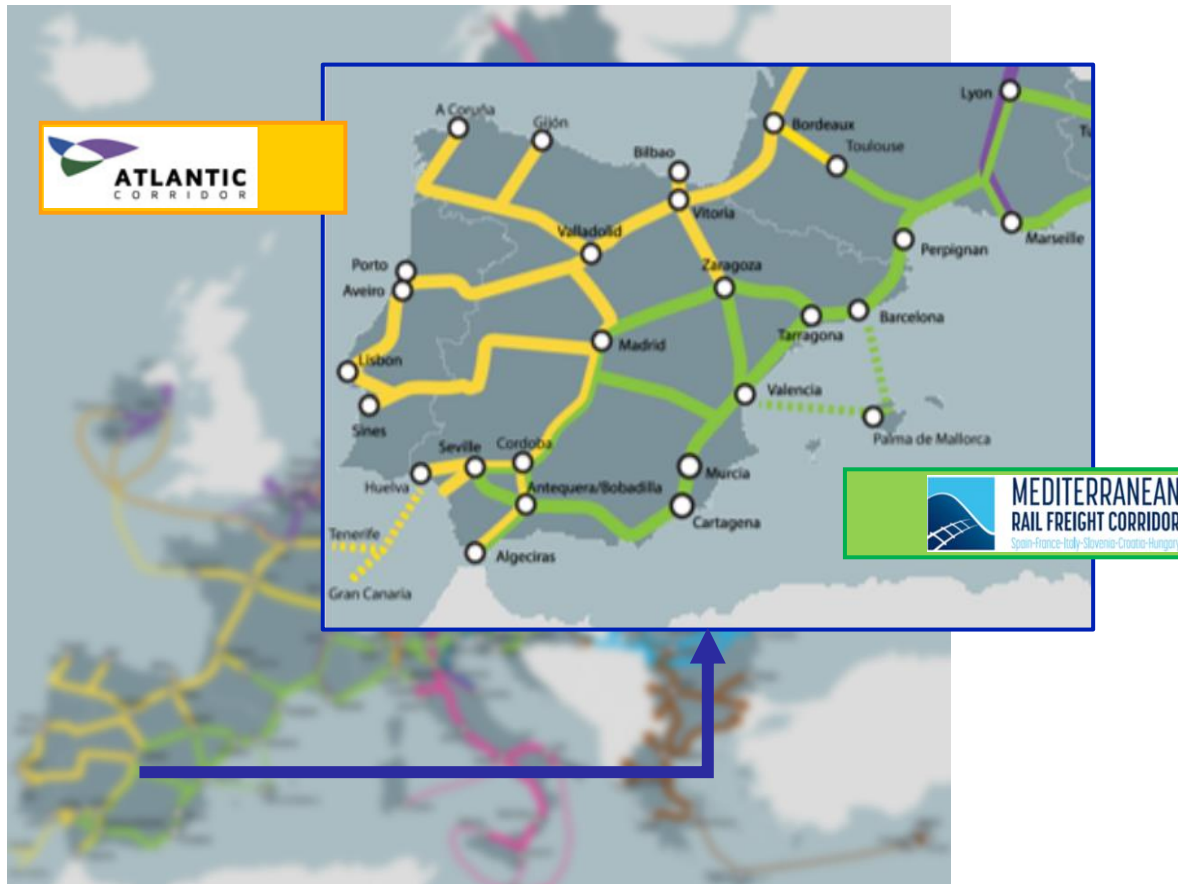
Liberalization



Cooperation tools IP - ADIF



European Transport Network (TEN-T)



Atlantic Corridor + Mediterranean Corridor

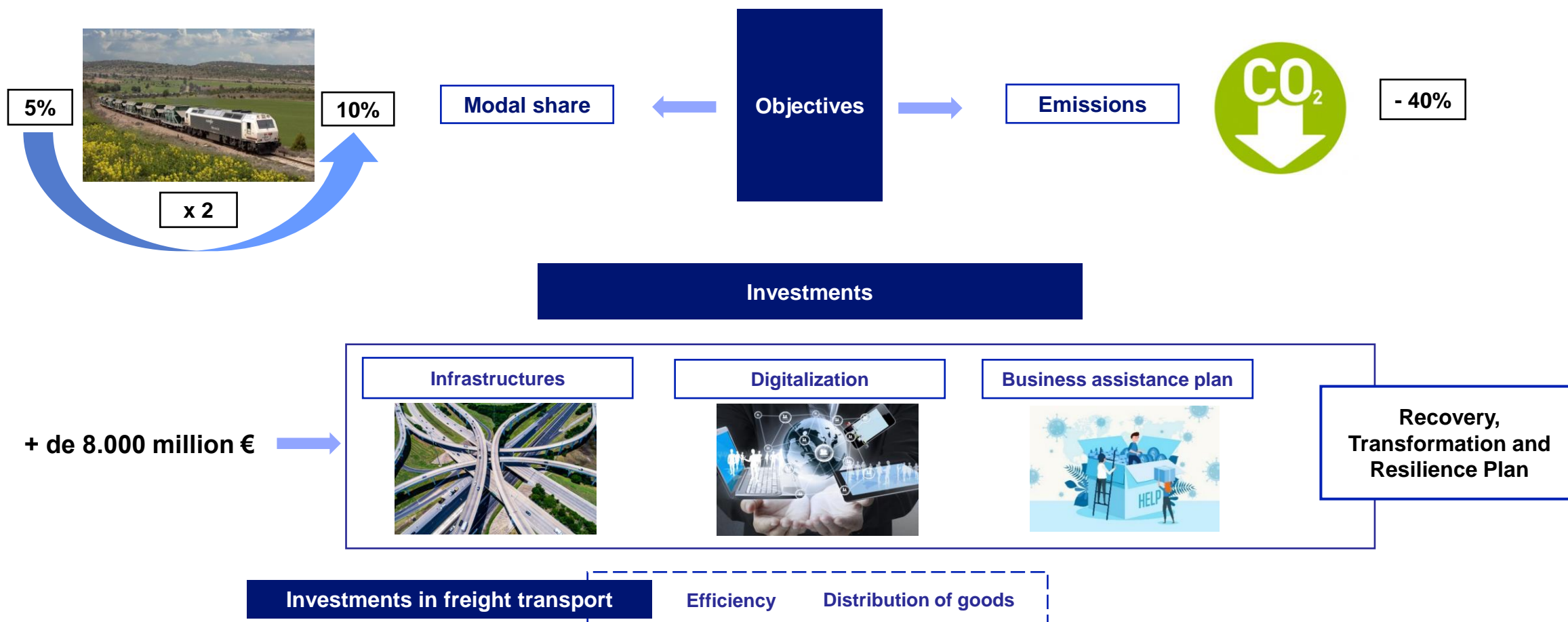


Iberian Dimension

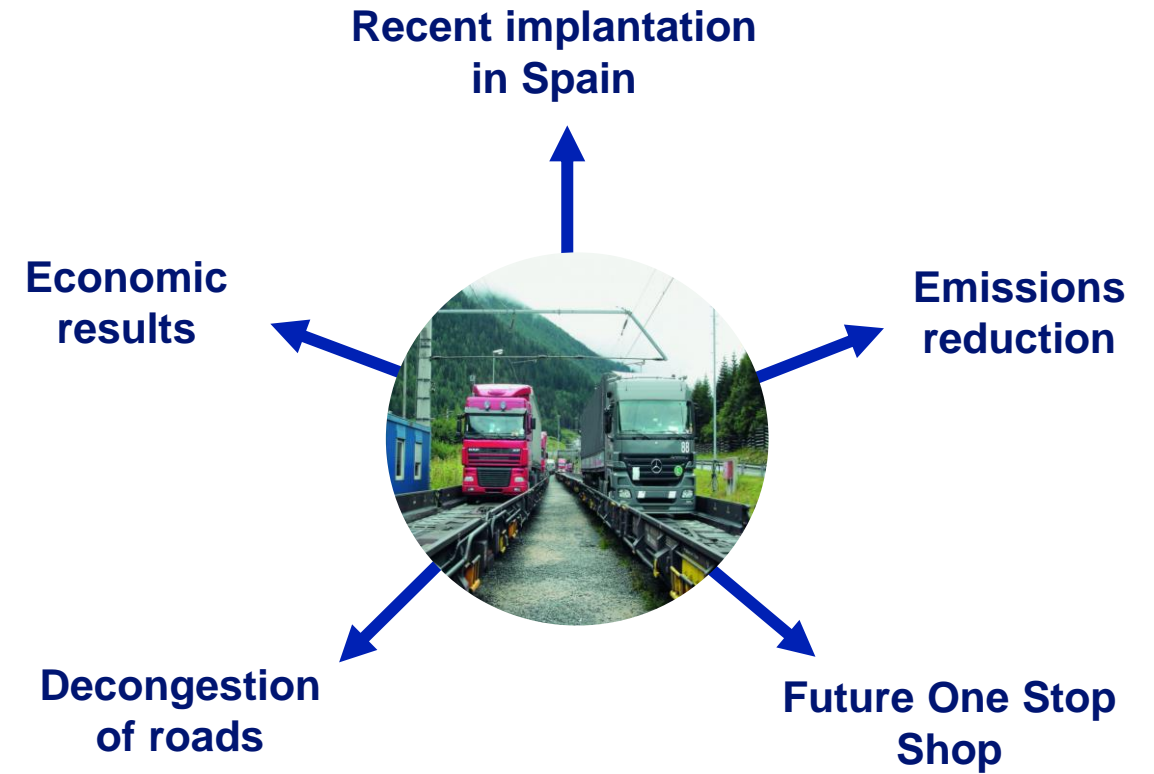


EU Dimension

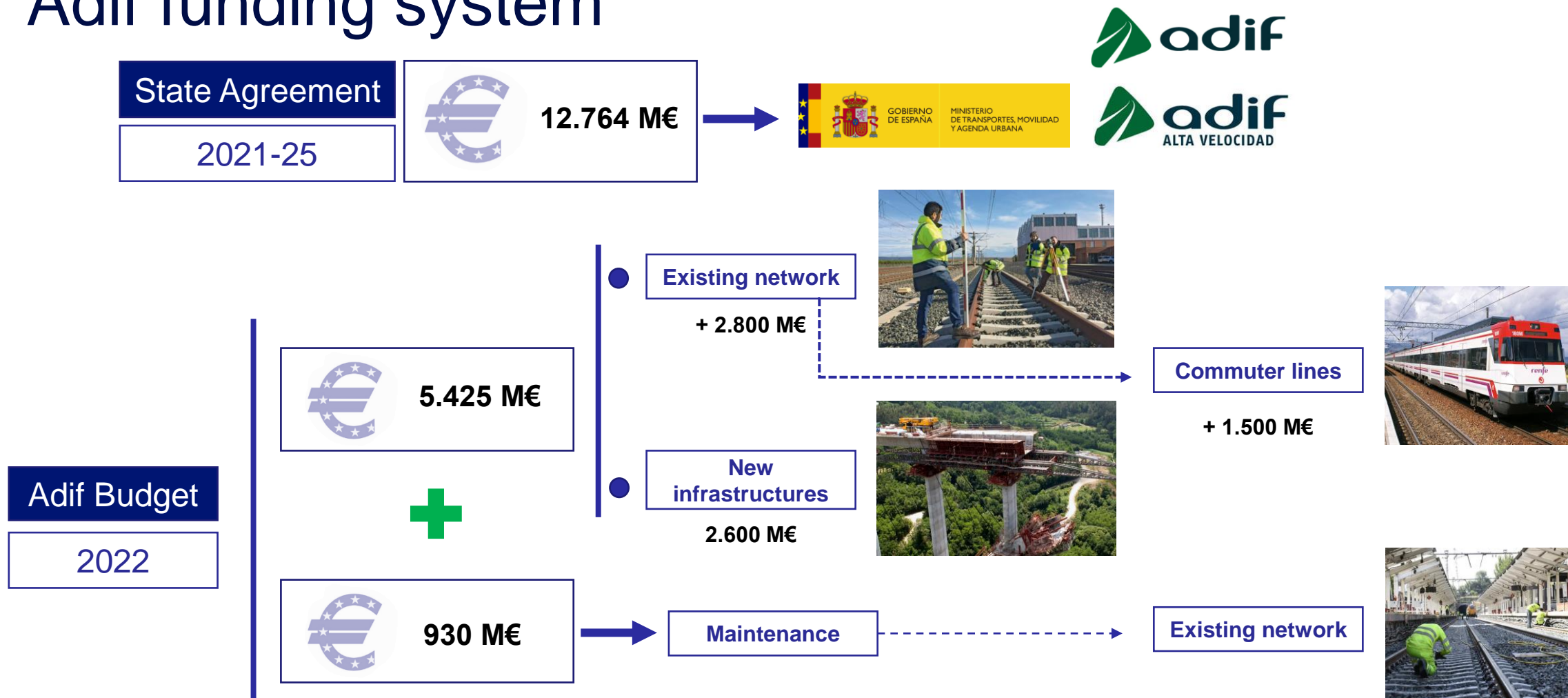
Plan Mercancías 30



Rolling highway



Adif funding system



Some challenges ahead

Challenges



Digitalization



**6.000
new employees**



**Diversity
EDI**



Corridors



**Intermodal
transport**



**Freight
market**

Green Deal





Adif International
Sor Ángela de la Cruz, 3
28020, Madrid, Spain
fnicolasp@adif.es
adifinternational@adif.es